

Features

- SMD PACKAGE
- HIGH EFFICIENCY UP TO 93%@3.3V FULL LOAD
- INPUT VOLTAGE FROM 8.3Vdc To 14Vdc
- OUTPUT VOLTAGE FROM 0.75Vdc To 5.0Vdc
- Remote Control:On/Off



**NON-ISOLATED
DC/DC Converter**

WIDE INPUT VOLTAGE RANGE

NON-ISOLATED (P.O.L)DC-DC CONVERTER

Input Specifications

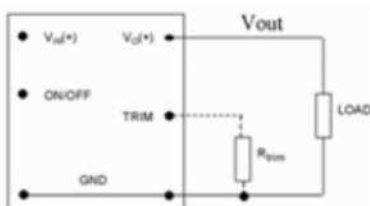
Input Voltage	:12Vdc	
Input Voltage Range	:8.3~14Vdc	
Input current no load	:100mA TYP	@Vin=12Vdc,Vo=3.3Vdc
Input current	:10A MAX	

Output Specifications

Output Voltage	:0.75~5Vdc	@Vin ≥ Vout+0.5V
Output Voltage Accuracy	:±2%	@Vin=8.3~14Vdc
Output Current	:10A	
Efficiency	:93% TYP	@Vin=12V,3.3Vdc/10A
Ripple / Noise	:75mVp-p MAX	@20MHz Bandwidth
Short Circuit Protection	:Continuous	@auto-recovery
Line Regulation	:±0.3% MAX	@Full Load
Load Regulation	:±0.4% MAX	@0% to 100% load

General Specifications

Operating Temperature Range	: -40°C ~ +85°C (with derating)	
Storage Temperature	: -55°C ~ +125°C	
Switching Frequency	: 300KHz TYP	
Humidity	: 95% MAX	
Cooling	: Natural Convection	@20LFM
MTBF	: >1048000 Hours	MIL-HDBK-217F@25°C,Ground Benign.
Weight	: 6.0g TYP	
Conducted Emission	: EN55022 Class A	
Radiated Emission	: EN55022 Class A	
Remote ON/OFF (reference to GND)	: Positive logic	
	: On: open circuit or Vin max.	
	: Off: 0 to 0.3 VDC	

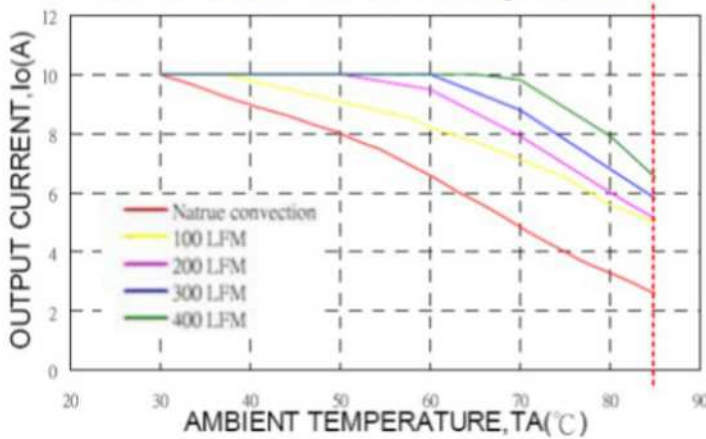


Trim Table	
Vo(set)(V)	Rtrim(kΩ)
0.7525	open
0.9	70.19
3.3	3.122
5	1.472

Temperature Derating Graph

Part Number

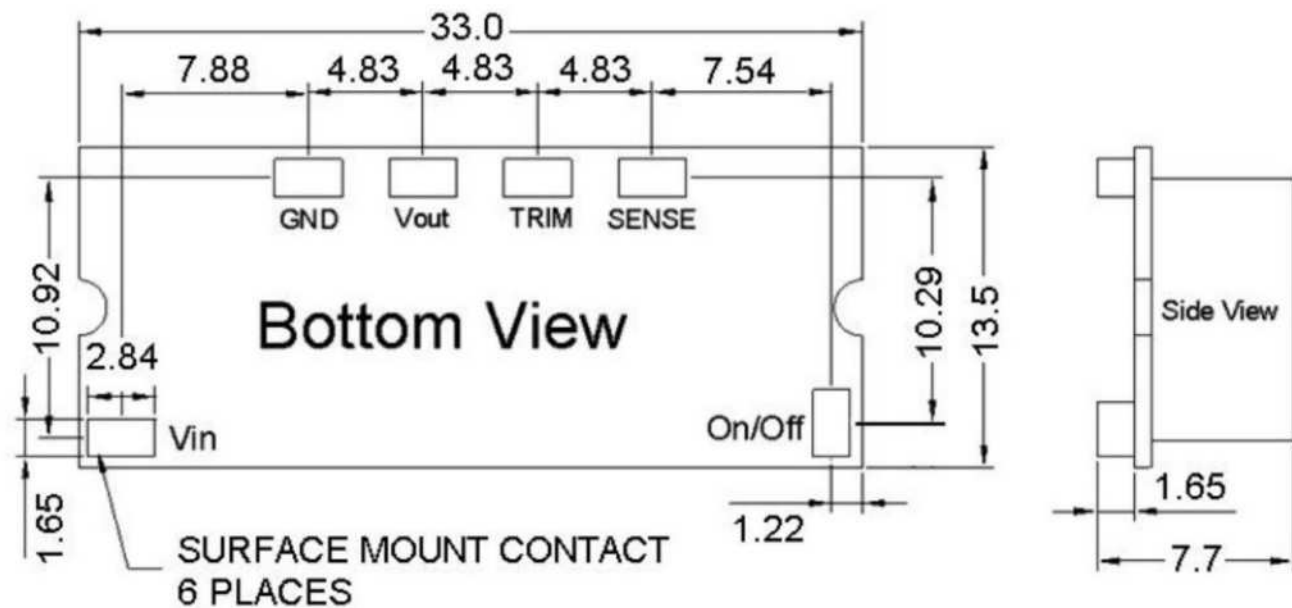
03D-12-10, Vo=3.3V, Derating Curve



03D — 12 — 10 — P
 A B C D

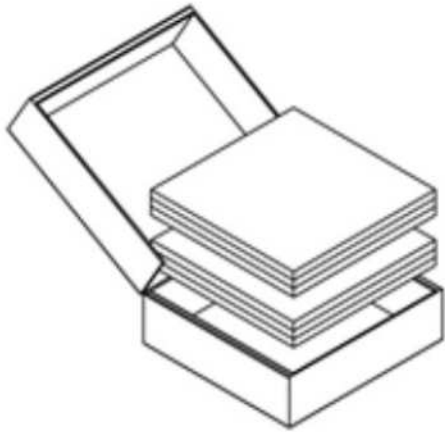
- A: Series
- B: Input Voltage
- C: Output Current
- D: Positive logic

Outline Dimensions

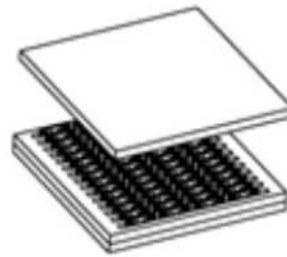


Unit : mm

Tolerance : XX.X ± 0.5 • XX.XX ± 0.25

Packing Formation

60 pcs * 2 = 120 pcs / box



4 pcs * 15Rows = 60 pcs

Weight	: 6.0 grams/pcs
Box	: 120 pcs