

Features

- 2WATT SIP PACKAGE
- EFFICIENCY TO 84%
- 100% BURNED IN
- UL 94V-0 PACKAGE MATERIAL
- CUSTOM SOLUTIONS AVAILABLE
- UNREGULATED OUTPUT TYPES
- Design refer to EN60601-1, ANSI/AAMI ES60601-1



**2 Watt DC/DC
Converter**

**2 Watt Dual O/P
Isolated DC-DC Converter**

Input Specifications

Input Voltage	:24Vdc
Input Voltage Range	:± 10%

Output Specifications

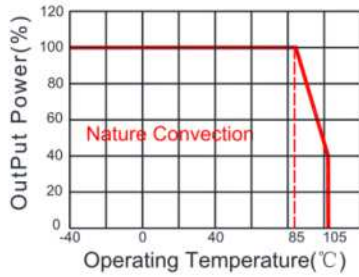
Output Voltage	:± 12Vdc	
Output Voltage Accuracy	:± 5%	@Vout=±11.4~±12.6Vdc@Vin=24Vdc
Output Current	:± 84mA	
Efficiency	:84% TYP	
Ripple / Noise	:120mVp-p MAX	@20MHz Bandwidth
Short Circuit Protection	:Continuous	
Line Regulation	:± 1.2% TYP	@ For 1.0% OF Vin
Load Regulation	:± 15% MAX	@10% to 100% full load
Capacitive Load	:± 100µF MAX	

General Specifications

Operating Temperature Range	:-40°C ~ +105°C	
Storage Temperature	:-55°C ~ +125°C	
Switching Frequency	:250KHz TYP	
Isolation Capacitance	:4pF TYP	@100KHz,0.1V
Humidity	:95% MAX	
Isolation Voltage	:5000Vac	@Input to Output (60sec/0.5mA)
Isolation Voltage	:6000Vdc	@Input to Output (60sec/0.5mA)
Isolation Resistance	:1000MΩ MIN	@ 500Vdc
Cooling	:Free air convection	
MTBF	:>3500000 Hours	MIL-HDBK-217F@25°C,Ground Benign.
Case Material	:DAP	
Weight	:4.0g TYP	

EMI	CE	EN60601-1-2/CISPR 11 GROUP1 CLASS B (see Fig. 1 for recommended circuit)
	RE	EN60601-1-2/CISPR 11 GROUP1 CLASS B (see Fig. 1 for recommended circuit)
EMS	ESD	EN60601-1-2 (IEC/EN61000-4-2) Air ±15kV, Contact ±8kV perf. Criteria B

Temperature Derating Graph

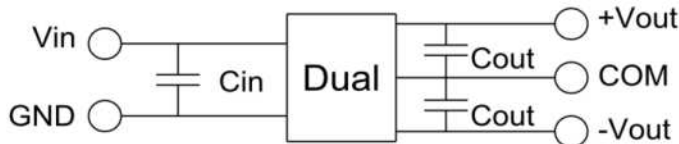


Part Number

12D1C - 24 D 12 N 2 M
 A B C D E F G

A:Series
 B:Input Voltage
 C: Dual Output
 D: Output Voltage
 E: Unregulated(N)
 F: Output Power
 G: Medical

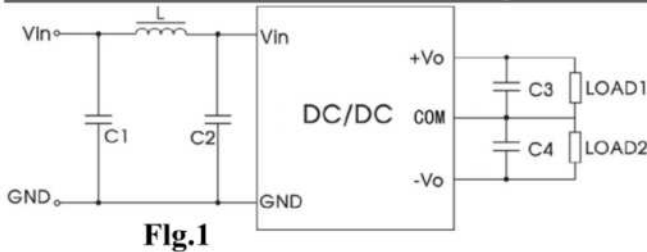
Recommended Test Circuit



Vin	Cin	Dual Vout	Cout
24Vdc	1μF/50V	±12Vdc	±1μF/25V

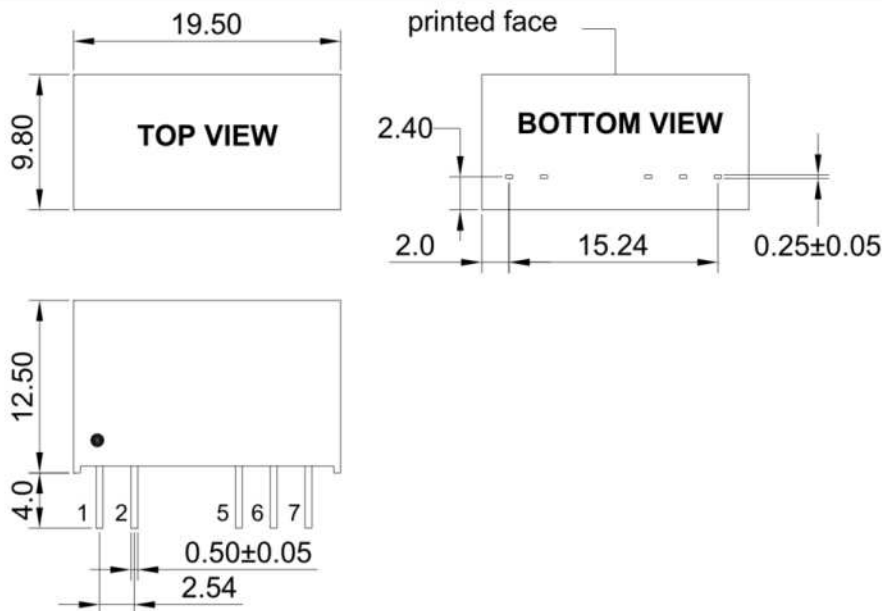
To make sure the product work at perfect operation status with full loading external capacitor is necessary and it is recommended to use high frequency low resistance electrolytic capacitor.

EMC (CLASS B) compliance circuit



EMC recommended circuit value table		
EMI	C1	22μF /50V
	C2	22μF /50V
	C3,C4	Recommended Test Circuit
	L	22μH

Outline Dimensions



UNIT:mm Unless otherwise specified,all tolerances are ±0.25

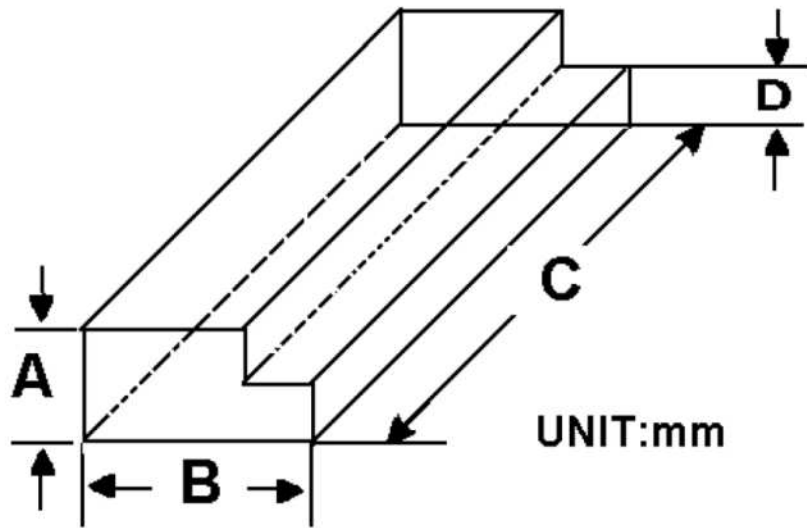
PIN	1	2	5	6	7
Dual	+Vin	-Vin	-Vout	Com	+Vout

Packing Information:

Weight----- 4.0grams/pcs

TUBE-----25pcs

Weight: 135.5g per tube



Size(mm)			
A	B	C	D
12.0	28.55	550	6.00

Outer carton unit: 2400pcs/96Tube/box

Weight: 14.0kg per carton

