

**Features**

- 3WATT SIP PACKAGE
- 2:1 WIDE INPUT VOLTAGES
- EFFICIENCY TO 75%
- 100% BURNED IN
- UL 94V-0 PACKAGE MATERIAL
- CUSTOM SOLUTIONS AVAILABLE
- REGULATED OUTPUT TYPES



**3 Watt DC/DC  
Converter**

WIDE INPUT VOLTAGE RANGE  
3 WATT DC-DC CONVERTER

**Input Specifications**

|                     |           |
|---------------------|-----------|
| Input Voltage       | :5Vdc     |
| Input Voltage Range | :4.5-9Vdc |

**Output Specifications**

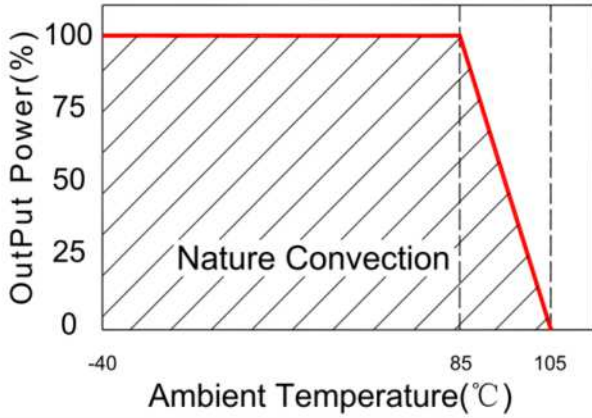
|                          |               |                                 |
|--------------------------|---------------|---------------------------------|
| Output Voltage           | :5Vdc         |                                 |
| Output Voltage Accuracy  | :±3%          | @Vout=4.85-5.15Vdc@Vin=4.5-9Vdc |
| Output Current           | :600mA        |                                 |
| Efficiency               | :75% TYP      |                                 |
| Ripple / Noise           | :100mVp-p MAX | @20MHz Bandwidth                |
| Short Circuit Protection | :Continuous   | @Automatics recovery            |
| Line Regulation          | :±0.3% MAX    | @ LL to HL at Full Load         |
| Load Regulation          | :±0.8% MAX    | @0% to 100%FL                   |

**General Specifications**

|                             |                              |                                   |
|-----------------------------|------------------------------|-----------------------------------|
| Operating Temperature Range | :-40°C ~ +85°C               |                                   |
| Storage Temperature         | :-40°C ~ +125°C              |                                   |
| Switching Frequency         | :200KHz TYP                  |                                   |
| Humidity                    | :95% MAX                     |                                   |
| Isolation Voltage           | :1500Vdc                     | @Input to Output ( 60sec/0.5mA )  |
| Isolation Resistance        | :1000MΩ MIN                  | @ 500Vdc                          |
| Cooling                     | :Free air convection         |                                   |
| MTBF                        | :>1500000 Hours              | MIL-HDBK-217F@25°C,Ground Benign. |
| Case Material               | :DAP                         |                                   |
| Weight                      | :4.5g TYP                    |                                   |
| <b>Remote Control:</b>      |                              |                                   |
| Turn On                     | : 0 ~ 0.8Vdc or open circuit |                                   |
| Turn Off                    | : 2.5 ~ 12Vdc                |                                   |

Temperature Derating Graph

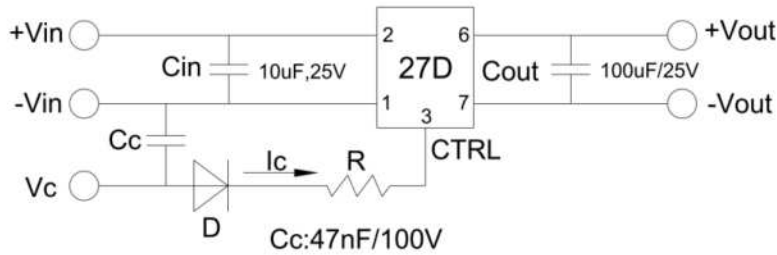
Part Number



27D - 05 S 05 R 3W  
 A B C D E F

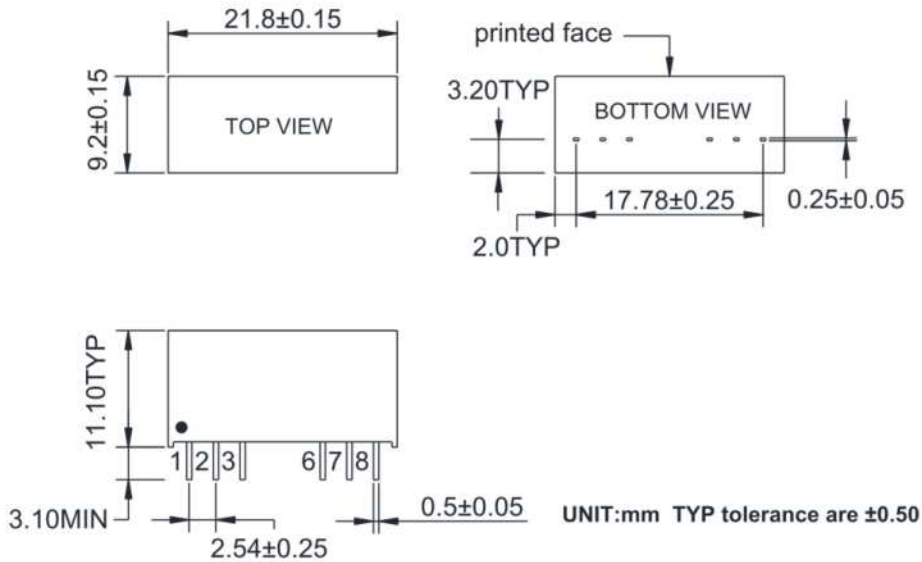
A:Series  
 B:Input Voltage  
 C:Single Output  
 D:Output Voltage  
 E:Regulated(R)  
 F:Output Power

Recommended Test Circuit



- When open or high impedance, the converter works well; When this pin is 'high', the converter shut down. It should be note that the input current should be between 5-10mA,exceeding the maximum 20mA will cause permanent damage to the converter.
- To make sure the product work at perfect operation status with full loading external capacitor is necessary and it is recommended to use high frequency low resistance electrolytic capacitor.

Outline Dimensions



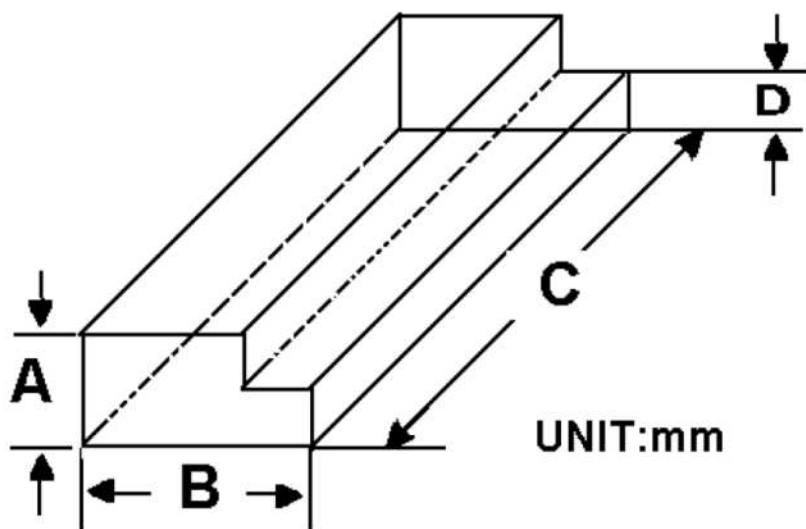
| PIN    | 1    | 2    | 3    | 6     | 7     | 8  |
|--------|------|------|------|-------|-------|----|
| Single | -Vin | +Vin | Ctrl | +Vout | -Vout | NC |

**Packing Information:**

Weight----- 4.5grams/pcs

TUBE-----22pcs

Weight: 134.5g per tube



| Size(mm) |       |     |      |
|----------|-------|-----|------|
| A        | B     | C   | D    |
| 12.0     | 28.55 | 550 | 6.00 |

Outer carton unit: 1760pcs/80Tube/box

Weight: 11.8kg per carton

