

Features

- 3WATT SIP PACKAGE
- 2:1 WIDE INPUT VOLTAGES
- EFFICIENCY TO 85%
- 100% BURNED IN
- UL 94V-0 PACKAGE MATERIAL
- CUSTOM SOLUTIONS AVAILABLE
- REGULATED OUTPUT TYPES



**3 Watt DC/DC
Converter**

WIDE INPUT VOLTAGE RANGE
3 WATT DC-DC CONVERTER

Input Specifications

| | |
|---------------------|-----------|
| Input Voltage | :24Vdc |
| Input Voltage Range | :18-36Vdc |

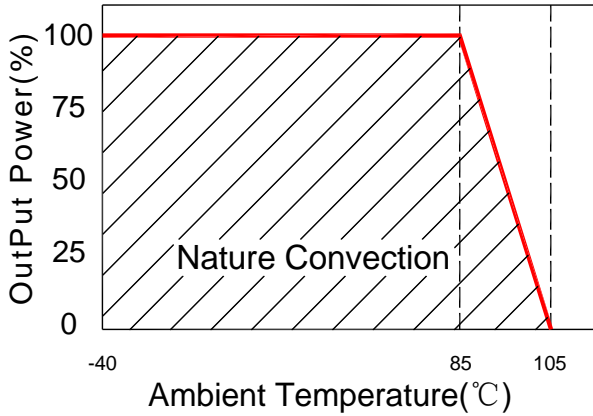
Output Specifications

| | | |
|--------------------------|---------------|-------------------------------------|
| Output Voltage | :±15Vdc | |
| Output Voltage Accuracy | :±3% | @Vout=±14.55~±15.45Vdc@Vin=18-36Vdc |
| Output Current | :±100mA | |
| Efficiency | :85% TYP | |
| Ripple / Noise | :100mVp-p MAX | @20MHz Bandwidth |
| Short Circuit Protection | :Continuous | @Automatics recovery |
| Line Regulation | :±0.5% MAX | @ LL to HL at Full Load |
| Load Regulation | :±0.8% MAX | @0% to 100%FL |

General Specifications

| | | |
|-----------------------------|------------------------------|-----------------------------------|
| Operating Temperature Range | :-40°C ~ +85°C | |
| Storage Temperature | :-40°C ~ +125°C | |
| Switching Frequency | :200KHz TYP | |
| Humidity | :95% MAX | |
| Isolation Voltage | :1500Vdc | @Input to Output (60sec/0.5mA) |
| Isolation Resistance | :1000MΩ MIN | @ 500Vdc |
| Cooling | :Free air convection | |
| MTBF | :>1500000 Hours | MIL-HDBK-217F@25°C,Ground Benign. |
| Case Material | :DAP | |
| Weight | :4.5g TYP | |
| Remote Control: | | |
| Turn On | : 0 ~ 0.8Vdc or open circuit | |
| Turn Off | : 2.5 ~ 12Vdc | |

Temperature Derating Graph

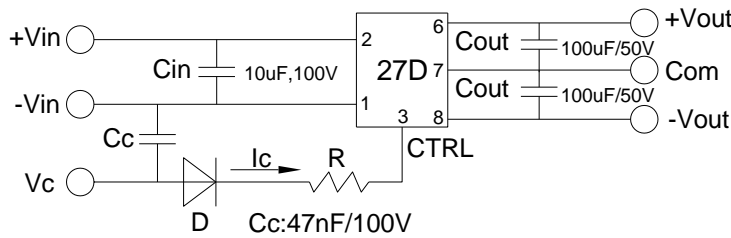


Part Number

27D - 24 D 15 R 3W
 A B C D E F

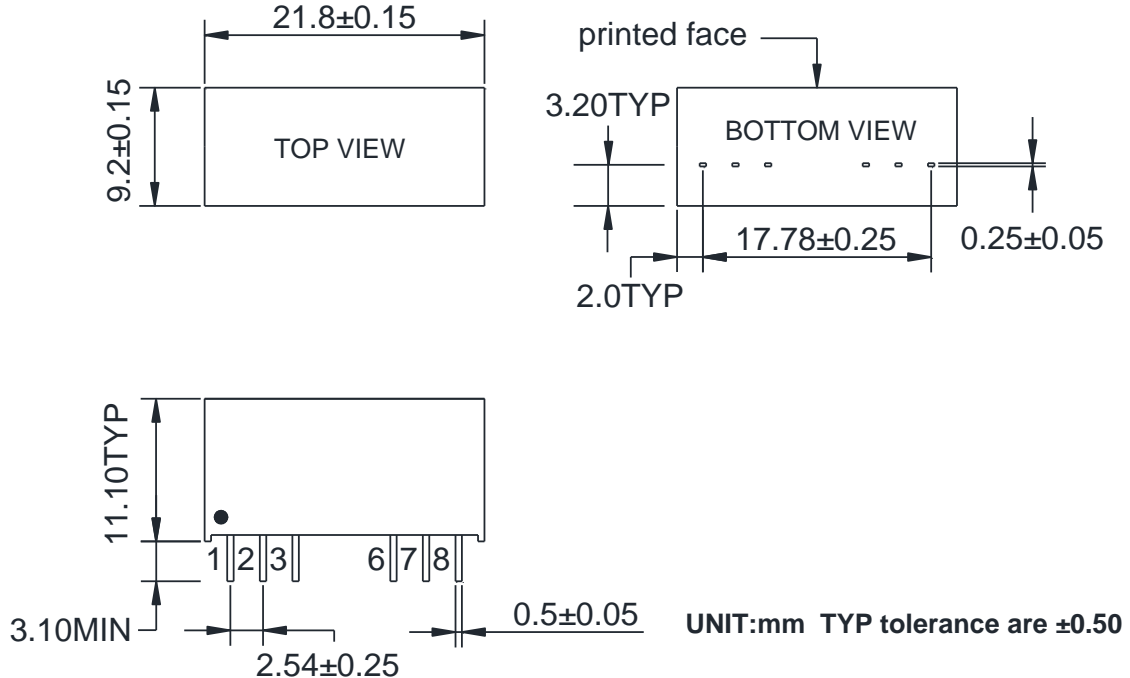
A:Series
 B:Input Voltage
 C:Dual Output
 D:Output Voltage
 E:Regulated(R)
 F:Output Power

Recommended Test Circuit



- When open or high impedance, the converter works well; When this pin is 'high', the converter shut down. It should be note that the input current should be between 5-10mA,exceeding the maximum 20mA will cause permanent damage to the converter.
- To make sure the product work at perfect operation status with full loading external capacitor is necessary and it is recommended to use high frequency low resistance electrolytic capacitor.

Outline Dimensions



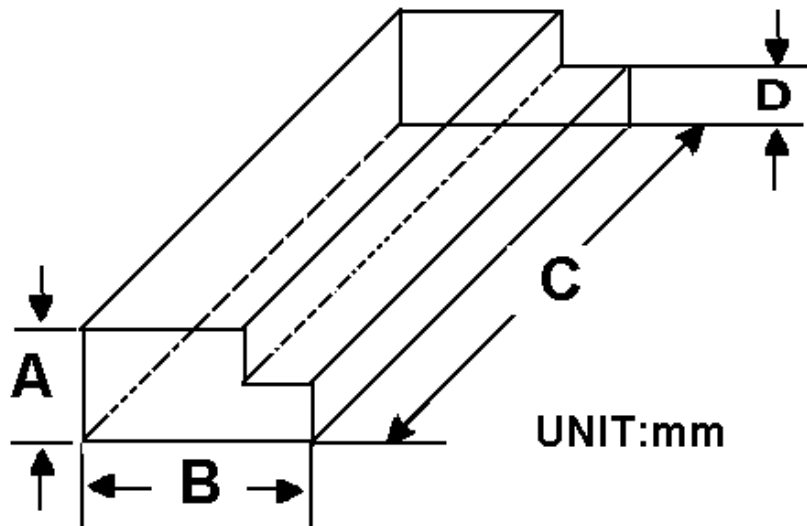
| PIN | 1 | 2 | 3 | 6 | 7 | 8 |
|------|------|------|--|-------|-----|-------|
| DUAL | -Vin | +Vin | Ctrl-Control input can (can be left open) | +Vout | COM | -Vout |

Packing Information:

Weight----- 4.5grams/pcs

TUBE-----22pcs

Weight: 134.5g per tube



| Size(mm) | | | |
|----------|-------|-----|------|
| A | B | C | D |
| 12.0 | 28.55 | 550 | 6.00 |

Outer carton unit: 1760pcs/80Tube/box

Weight: 11.8kg per carton

