

Features

- 2WATT SIP PACKAGE
- 2:1 WIDE INPUT VOLTAGES
- EFFICIENCY TO 83%
- 100% BURNED IN
- UL 94V-0 PACKAGE MATERIAL
- CUSTOM SOLUTIONS AVAILABLE
- REGULATED OUTPUT TYPES



**2 Watt DC/DC
Converter**

WIDE INPUT VOLTAGE RANGE
2 WATT DC-DC CONVERTER

Input Specifications

Input Voltage	:24Vdc
Input Voltage Range	:18-36Vdc

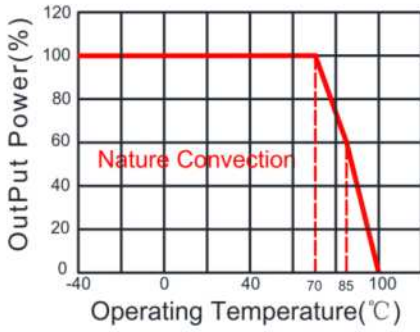
Output Specifications

Output Voltage	:±15Vdc	
Output Voltage Accuracy	:±3%	@Vout=±14.55-±15.45Vdc@Vin=18-36Vdc
Output Current	:±66mA	
Efficiency	:83% TYP	
Ripple / Noise	:100mVp-p MAX	@20MHz Bandwidth
Short Circuit Protection	:Continuous	@Automatics recovery
Line Regulation	:±0.5% MAX	@ LL to HL at Full Load
Load Regulation	:±0.8% MAX	@0% to 100%FL

General Specifications

Operating Temperature Range	:-40°C ~ +85°C	
Storage Temperature	:-40°C ~ +100°C	
Switching Frequency	:200KHz TYP	
Humidity	:95% MAX	
Isolation Voltage	:1000Vdc	@Input to Output (60sec/0.5mA)
Isolation Resistance	:1000MΩ MIN	@ 500Vdc
Cooling	:Free air convection	
MTBF	:>1500000 Hours	MIL-HDBK-217F@25°C,Ground Benign.
Case Material	:DAP	
Weight	:4.5g TYP	
Remote Control:		
Turn On	: 0 ~ 0.8Vdc or open circuit	
Turn Off	: 2.5 ~ 12Vdc	

Temperature Derating Graph

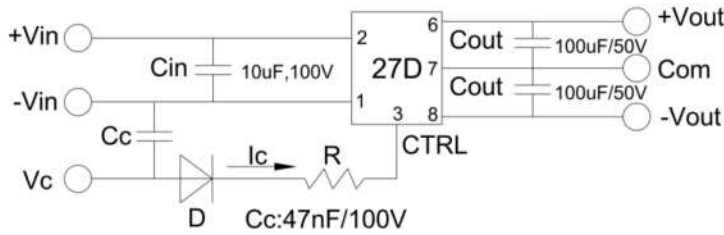


Part Number

27D - 24 D 15 R NL
A B C D E F

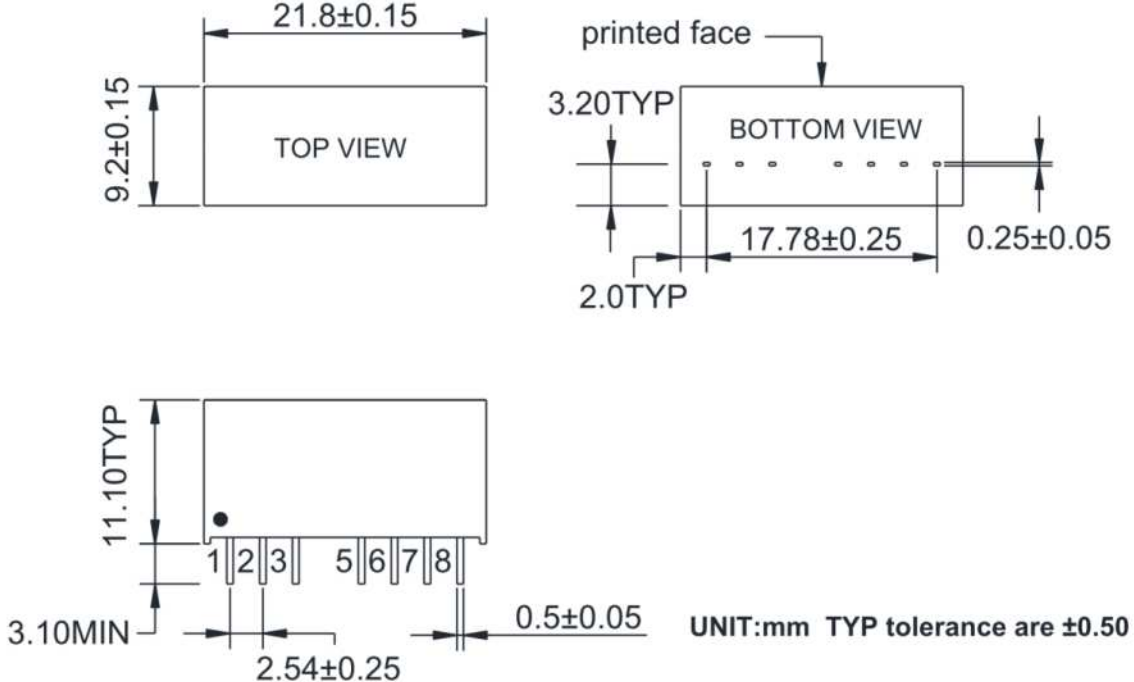
A:Series
B:Input Voltage
C:Dual Output
D:Output Voltage
E:Regulated(R)
F:RoHS Version

Recommended Test Circuit



1. When open or high impedance, the converter works well; When this pin is 'high', the converter shut down. It should be note that the input current should be between 5-10mA,exceeding the maximum 20mA will cause permanent damage to the converter.
2. To make sure the product work at perfect operation status with full loading external capacitor is necessary and it is recommended to use high frequency low resistance electrolytic capacitor.

Outline Dimensions



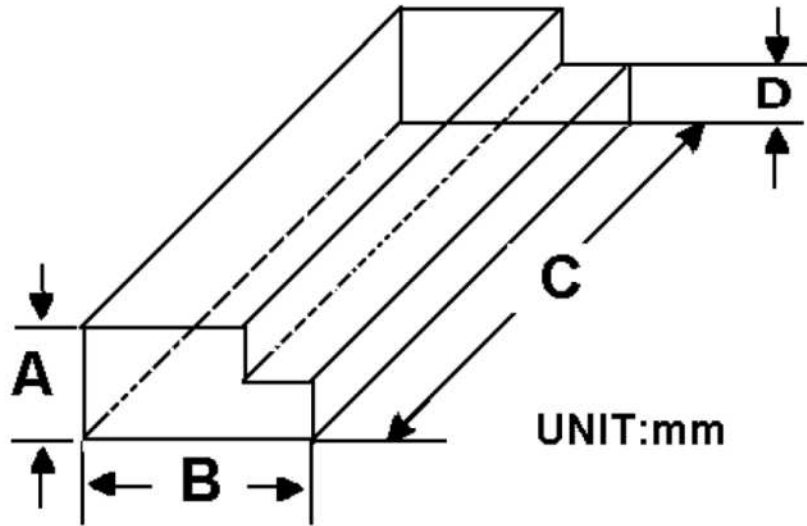
IN	1	2	3	5	6	7	8
Dual	-Vin	+Vin	Ctrl	NE-No external connection allowed	+Vout	COM	-Vout

Packing Information:

Weight----- 4.5grams/pcs

TUBE-----22pcs

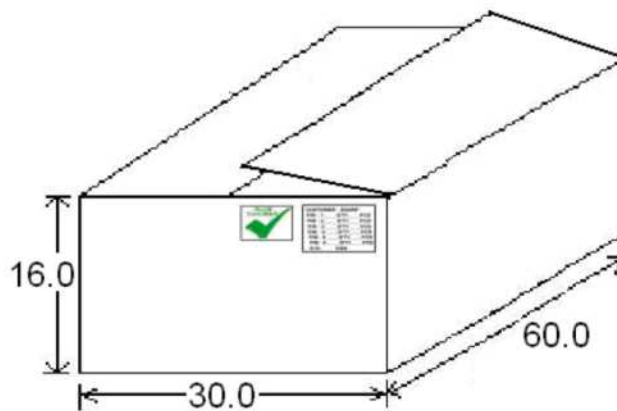
Weight: 134.5g per tube



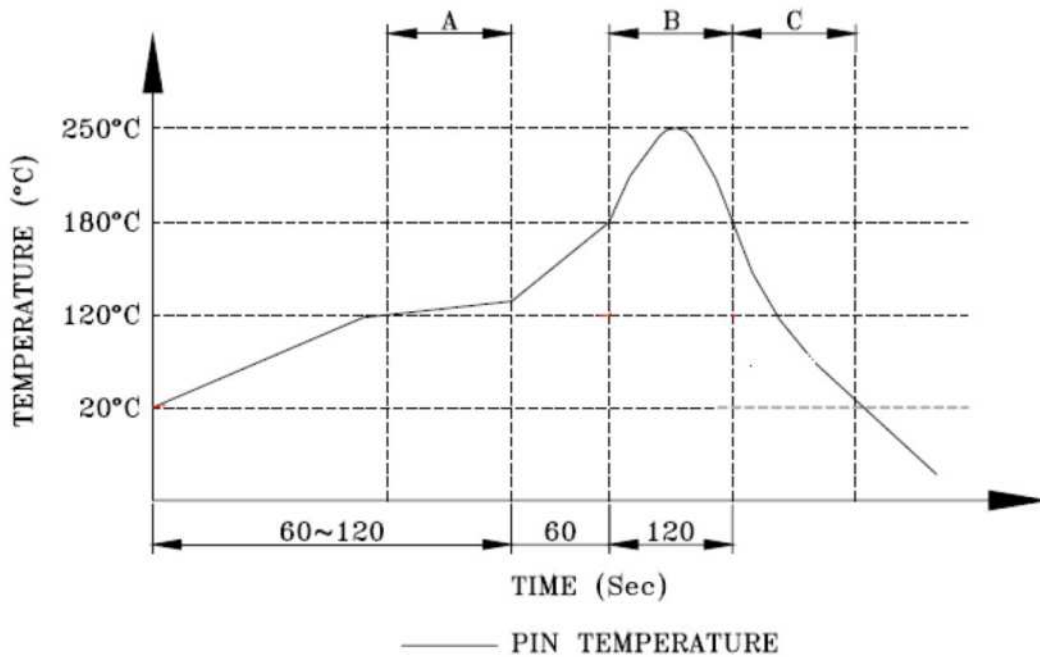
Size(mm)			
A	B	C	D
12.0	28.55	550	6.00

Outer carton unit: 1760pcs/80Tube/box

Weight: 11.8kg per carton



PROFILE OF WAVE SOLDER



A. Preheating B. Soldering C. Gradual Cooling

SUGGESTED WAVE SOLDER CURVE

- (1) Tip temperature : $250 \pm 10^\circ\text{C}$
- (2) Tip temperature time : 5sec max