

Features

- 6WATT SIP PACKAGE
- 4:1 WIDE INPUT VOLTAGES
- EFFICIENCY TO 80%
- 100% BURNED IN
- UL 94V-0 PACKAGE MATERIAL
- CUSTOM SOLUTIONS AVAILABLE
- REGULATED OUTPUT TYPES



**6 Watt DC/DC
Converter**

WIDE INPUT VOLTAGE RANGE
6 WATT DC-DC CONVERTER

Input Specifications

Input Voltage	:24Vdc	
Input Voltage Range	:9-36Vdc	
Surge Voltage (1S. max.)	:50Vdc	
Input current	:312.5mA TYP	@Vin=24Vdc, Io=±600mA

Output Specifications

Output Voltage	:±5Vdc	
Output Voltage Accuracy	:±3%	@Vout=±4.85-±5.15Vdc@Vin=9-36Vdc
Output Current	:±600mA	
Efficiency	:80% TYP	@Vin=24Vdc, Io=±600mA
Capacitive Load MAX	:±470uF	
Ripple / Noise	:150mVp-p MAX	@20MHz Bandwidth
Short Circuit Protection	:Continuous	@Automatics recovery
Line Regulation	:±1.0% MAX	@ LL to HL at Full Load
Load Regulation	:±1.5% MAX	@0% to 100%FL

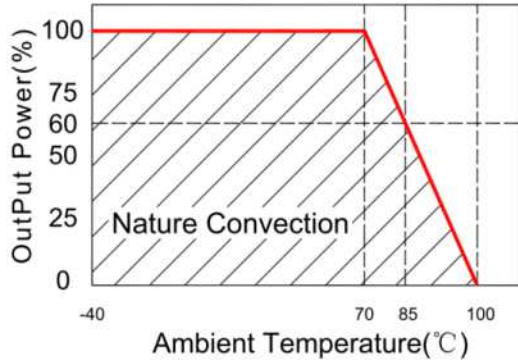
General Specifications

Operating Temperature Range	:-40°C ~ +85°C	
Storage Temperature	:-40°C ~ +100°C	
Switching Frequency	:330KHz TYP	
Humidity	:95% MAX	
Isolation Voltage	:1600Vdc	@Input to Output (60sec/0.5mA)
Isolation Resistance	:1000MΩ MIN	@ 500Vdc
Cooling	:Free air convection	
MTBF	:>1500000 Hours	MIL-HDBK-217F@25°C, Ground Benign.
Case Material	:DAP	
Weight	:4.5g TYP	
Remote Control:		
Turn On	: 0 ~ 0.8Vdc or open circuit	
Turn Off	: 2.5 ~ 12Vdc	

Note. Ripple and noise are measured using a 20 MHz bandwidth, measured using 1uF capacitors, and output at full load

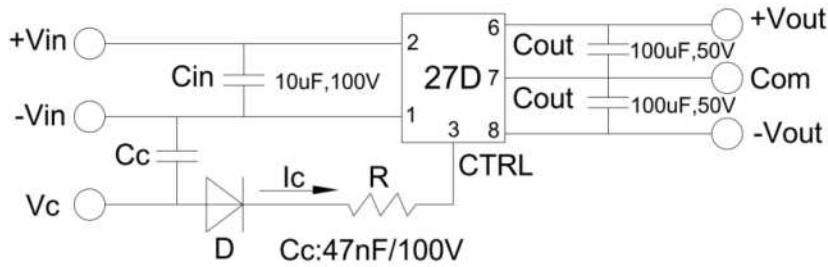
Temperature Derating Graph

Part Number



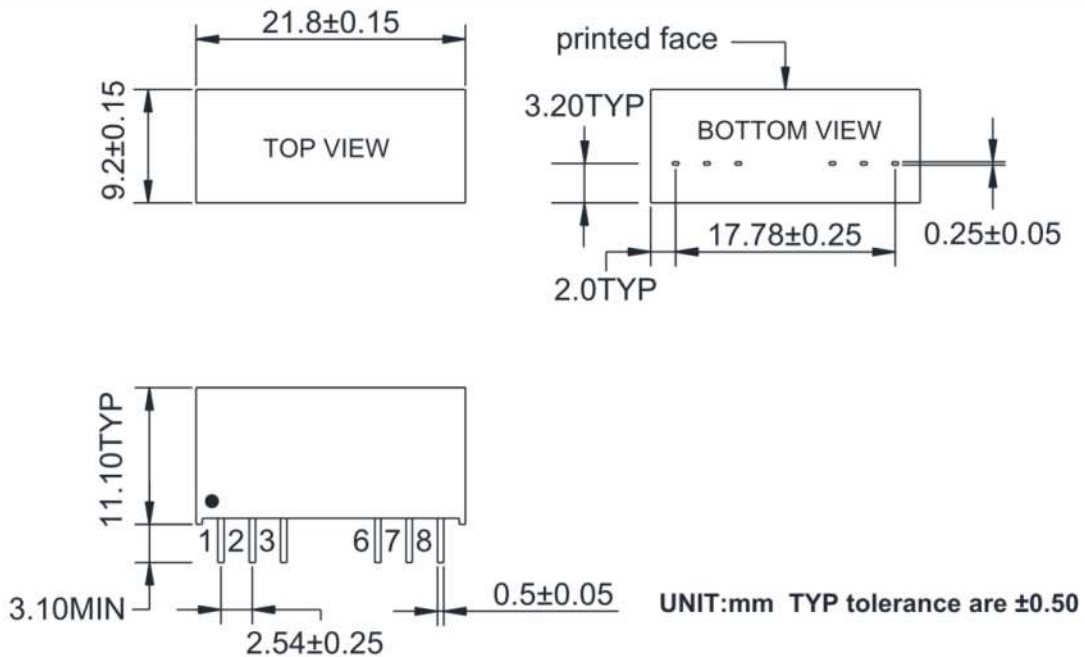
27DC - 24 D 05 R 6
 A B C D E F
 A:Series
 B:Input Voltage
 C:Dual Output
 D:Output Voltage
 E:Regulated(R)
 F:Output Power

Recommended Test Circuit



- When open or high impedance, the converter works well; When this pin is 'high', the converter shut down. It should be note that the input current should be between 5-10mA,exceeding the maximum 20mA will cause permanent damage to the converter.
- To make sure the product work at perfect operation status with full loading external capacitor is necessary and it is recommended to use high frequency low resistance electrolytic capacitor.

Outline Dimensions



UNIT:mm TYP tolerance are ±0.50

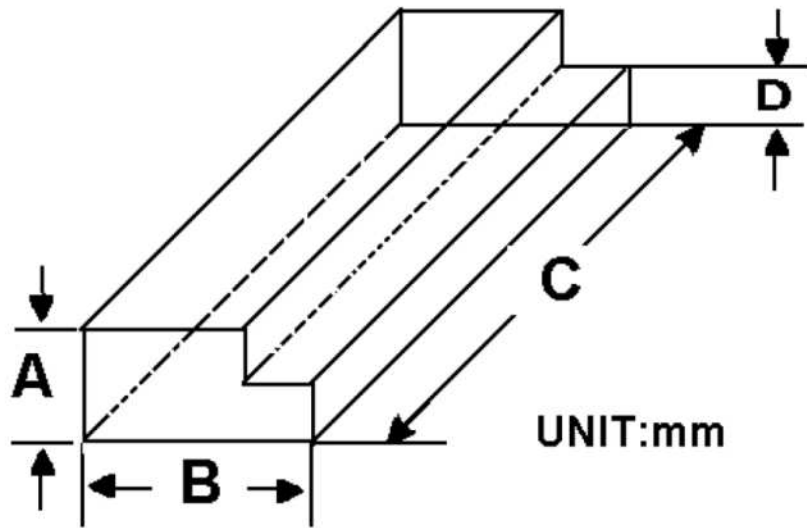
PIN	1	2	3	6	7	8
Single	-Vin	+Vin	Ctrl-Control input can (can be left open)	+Vout	-Vout	NC

Packing Information:

Weight----- 4.5grams/pcs

TUBE-----22pcs

Weight: 134.5g per tube



Size(mm)			
A	B	C	D
12.0	28.55	550	6.00

Outer carton unit: 1760pcs/80Tube/box

Weight: 11.8kg per carton

